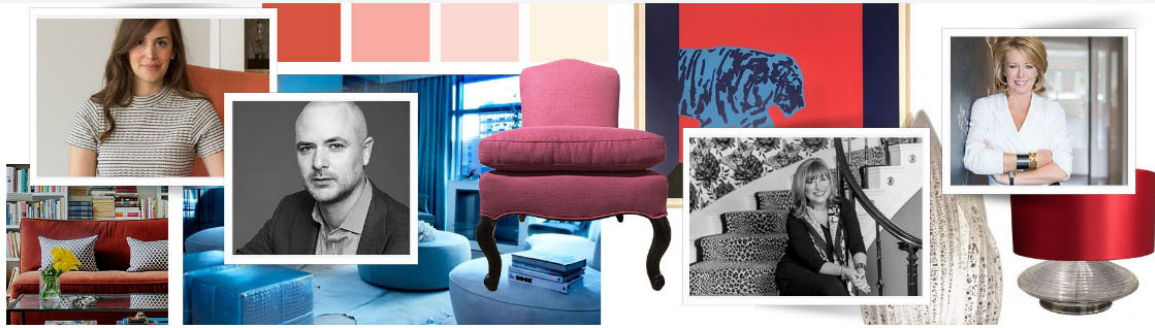




# ask a designer: valentine's day edition



Is millennial pink still in? How to reconcile clients (couples) who have different design ideas? Should psychology be taught in design schools? Let the Valentine's Day celebrations roll in with these four interior designers tips.



## Kim Radovich

**What are the best types of lighting one can use to adjust mood in an interior? (Please pick one item from Sotheby's Home.)**

Dimmers are essential for overhead lighting, and will of course change the atmosphere in a space when lowered or lifted; but using ambient lighting cleverly is the trick to creating mood in a room. Ambient lighting is light that comes from all directions in a uniform, unfocused, indirect manner. The Bella Figura Beehive, with light reflecting onto the glass lamp base and above the shade in tandem with The Bella Figura Paradise Lamp, where the light lives within the lamp body itself, would certainly be a dramatic duo.



Bella Figura Lamps

**What kind of design advice would you give to someone who has fallen out of love with his/her home décor, but doesn't want to go through a total makeover?**

Wall covering is always my go-to when I want an instant makeover. A textured grass cloth or a fabulous Chinoiserie and – voilà – instant makeover. Then it's all about accessorizing...with pillows, throws, and art (and yes, that includes those ambient light fixtures). Simply rearranging existing furnishings can also really make a difference.

**What are some turnkey types of accessories one can add to bring more romance to a room? (whether pink/red color décor or natural elements like flowers)**

Candles!!!! Flickering light and a beautiful scent can change the mood in a moment.

